



36 WELLFIELDS DRIVE

BRIDPORT, DT6 3HH

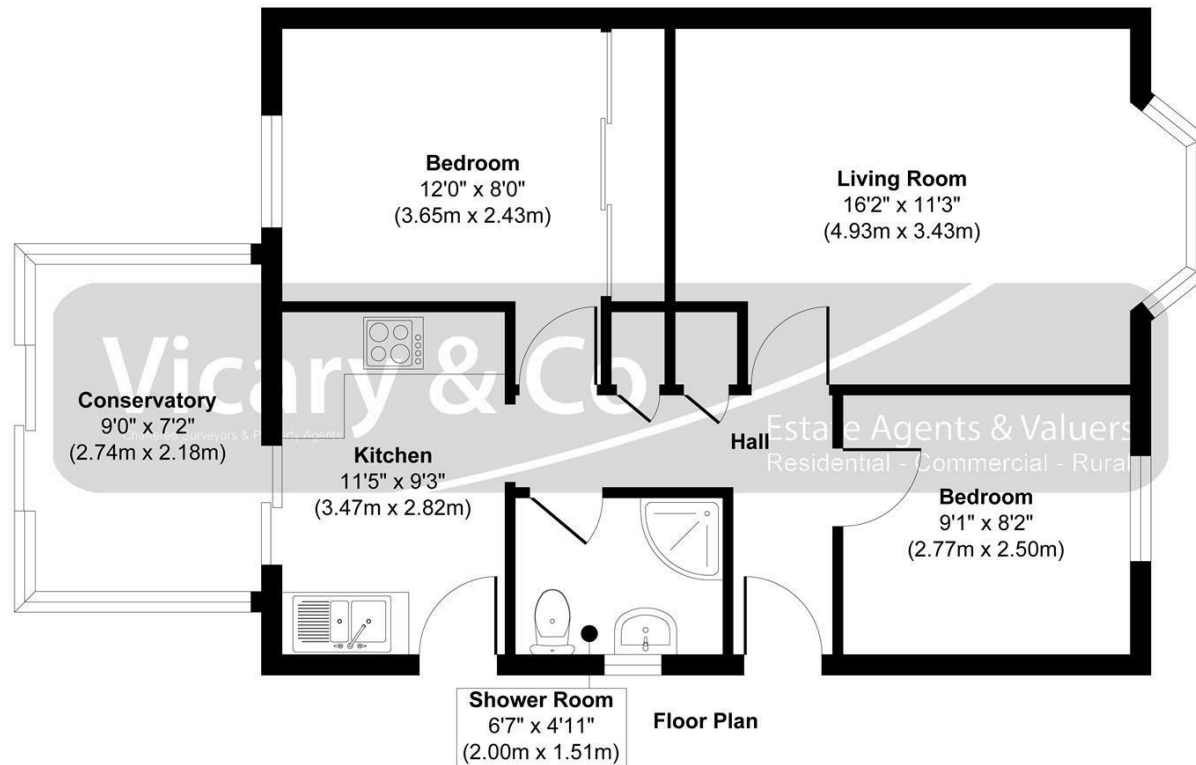
£295,000
FREEHOLD

A well-appointed two-bedroom semi-detached bungalow positioned in a popular location on the edge of Bridport town. Two Bedrooms, Modern Kitchen & Bathroom, Conservatory, Low Maintenance Garden, Single Garage. Council Tax Band: C

Vicary & Co
Chartered Surveyors & Property Agents

Estate Agents & Valuers
Residential - Commercial - Rural

Wellfields Drive, Bridport, Dorset, DT6 3HH



Approx. Gross Internal Floor Area 620 sq. ft / 57.68 sq. m

Produced by Element Property



Energy Efficiency Rating		
	Current	Potential
Very energy efficient - lower running costs		
(92 plus) A		87
(81-91) B		
(69-80) C	68	
(55-68) D		
(39-54) E		
(21-38) F		
(1-20) G		
Not energy efficient - higher running costs		
England & Wales	EU Directive 2002/91/EC	

Agents Note: Whilst every care has been taken to prepare these particulars, they are for guidance purposes only. All measurements are approximate and are for general guidance purposes only and whilst every care has been taken to ensure their accuracy, they should not be relied upon and potential buyers/tenants are advised to recheck the measurements

Axminster Office Sales
5 South Street
Axminster
Devon
EX13 5AD

0129733449
sales@vicaryandco.com
<http://www.vicaryandco.com>

