



## 4 KNIGHTSTONE RISE

BRIDPORT, DT6 3DR

£349,000  
FREEHOLD

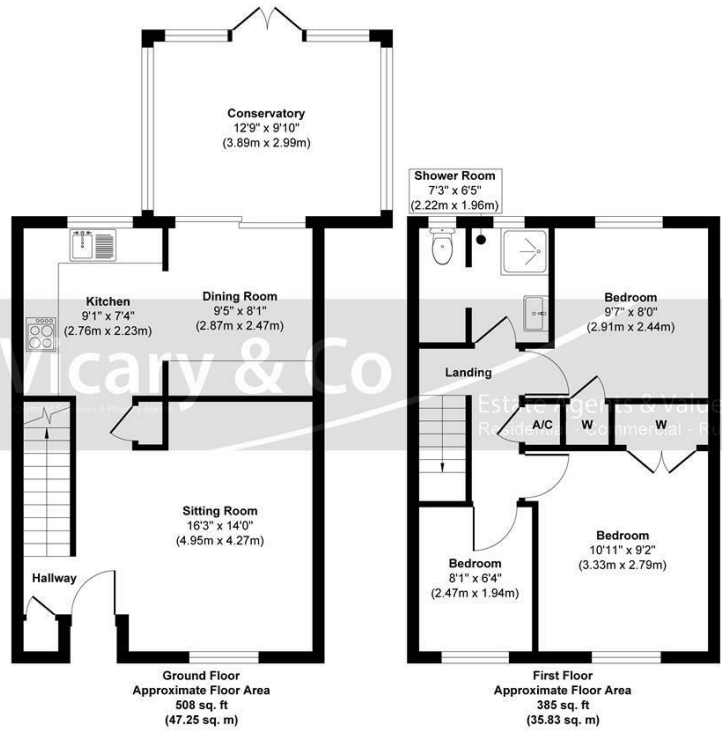
Three bedroom family home on the outskirts of Bridport, convenient for local shops and schools, benefitting from an enclosed rear garden, allocated parking and a garage on block. Subject to Section 157 local restriction. Energy rating D (67).

**Vicary & Co**  
Chartered Surveyors & Property Agents

Estate Agents & Valuers  
Residential - Commercial - Rural



## Knightstone Rise, Bridport, Dorset, DT6 3DR



Approx. Gross Internal Floor Area 893 sq. ft / 83.08 sq. m

Produced by Elements Property



Energy Efficiency Rating		
	Current	Potential
Very energy efficient - lower running costs		
(92 plus) <b>A</b>		
(81-91) <b>B</b>		
(69-80) <b>C</b>		
(55-68) <b>D</b>		
(39-54) <b>E</b>		
(21-38) <b>F</b>		
(1-20) <b>G</b>		
Not energy efficient - higher running costs		
<b>England &amp; Wales</b>	EU Directive 2002/91/EC	

Agents Note: Whilst every care has been taken to prepare these particulars, they are for guidance purposes only. All measurements are approximate and are for general guidance purposes only and whilst every care has been taken to ensure their accuracy, they should not be relied upon and potential buyers/tenants are advised to recheck the measurements

Axminster Office Sales  
5 South Street  
Axminster  
Devon  
EX13 5AD

0129733449  
sales@vicaryandco.com  
<http://www.vicaryandco.com>

